

Data Champion: Hongmei Shen

PSFA CSST Team: Lanie Lockwood (Chair), Heather Canary, Nora Leyva, Scott Lipscomb, Theresa Luu, Hongmei Shen, Mark Siprut, Carl Winston

BACKGROUND

Historically high graduation rates

31 out of 41 majors: high entry requirements

An exploratory study continued

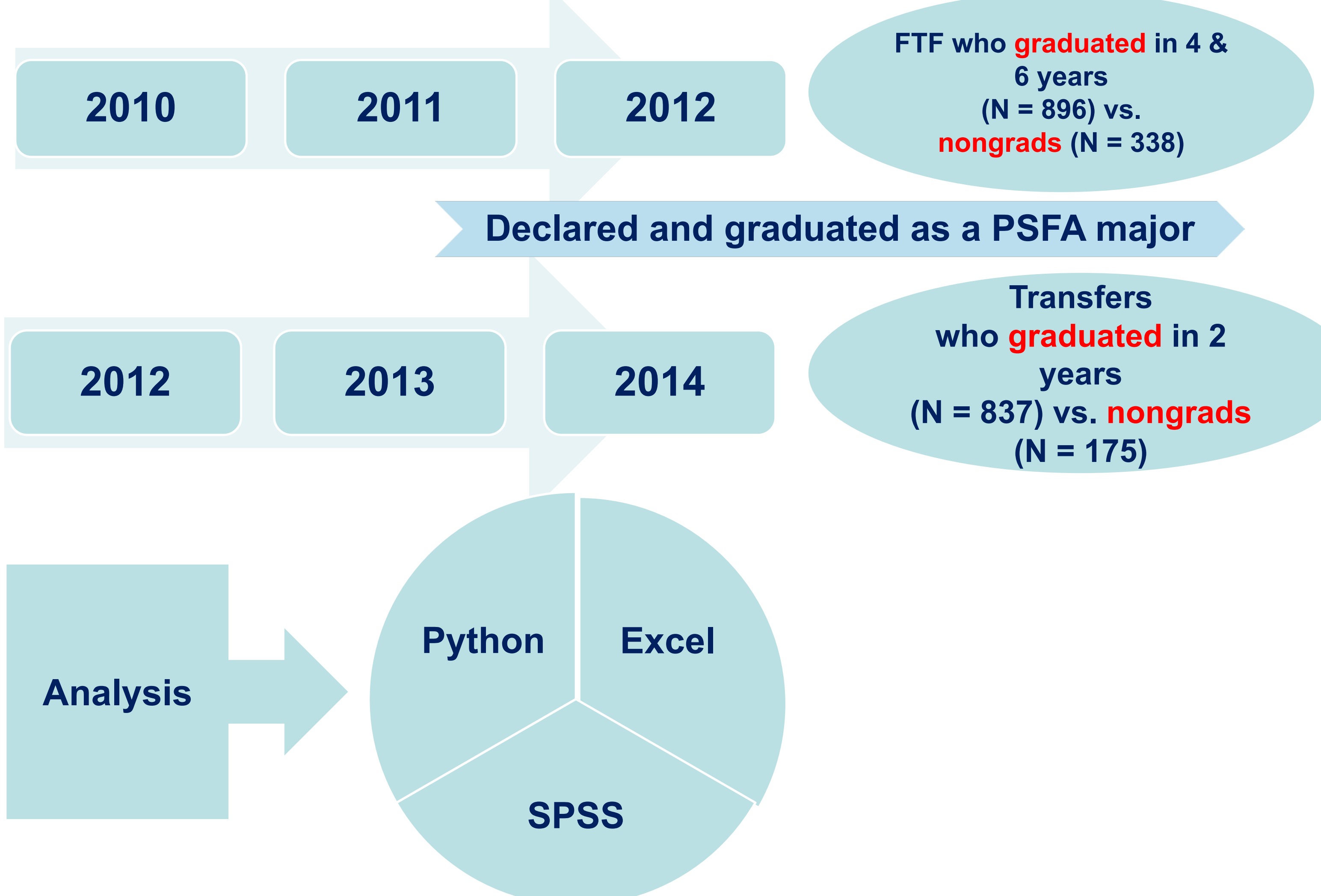
Goal: Developing a nuanced understanding of premajor experiences and premajor-to-major status change (FTF and Transfer grads vs. nongrads)

Goal: Identifying possible structural changes to curriculum offerings, advising strategies and initiatives to support students' progress to graduation

RESEARCH QUESTIONS: Grads vs. NonGrads

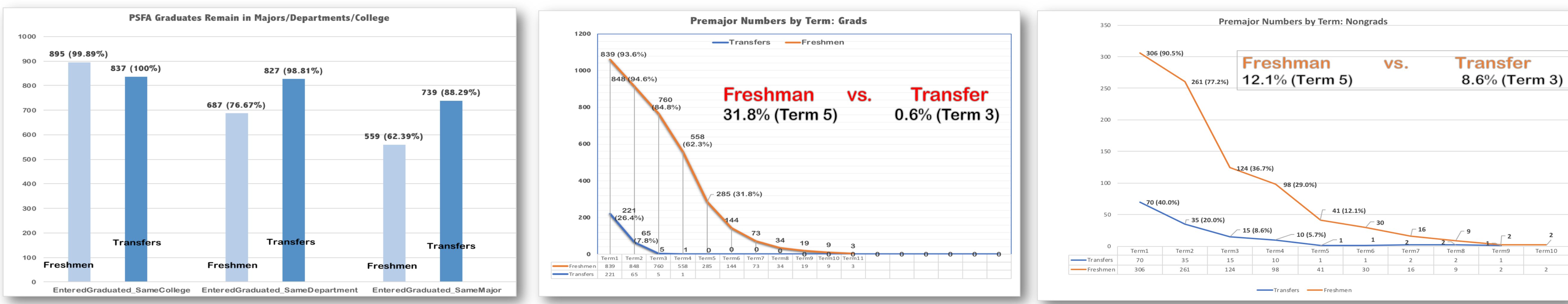
1. Terms in premajor status, terms to degree once admitted to major, terms to degree total; Demographic predictors of terms to degree
2. Cumulative GPAs each term as a premajor, vis-a-vis required major GPA
3. Major change at all? Major change pattern?
4. Course repeats at all? Bottlenecking courses?
5. Earned units as a premajor vs. as a major?
6. Most recent transfer institutions?

METHODS

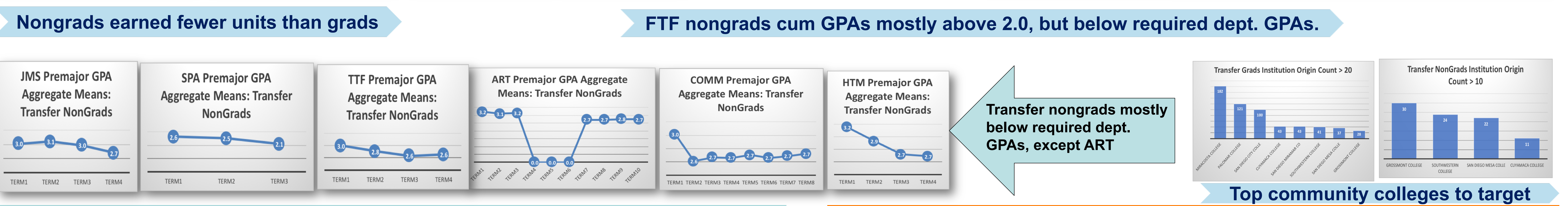
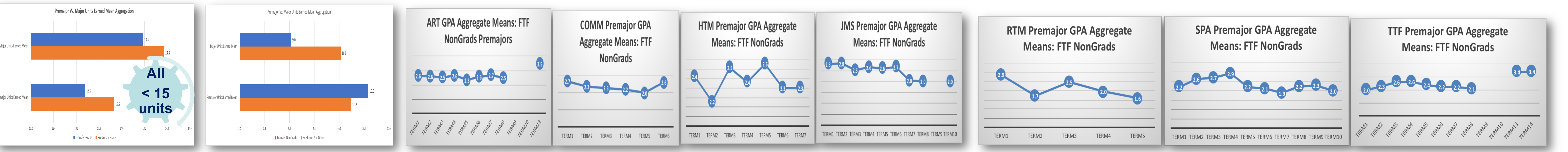
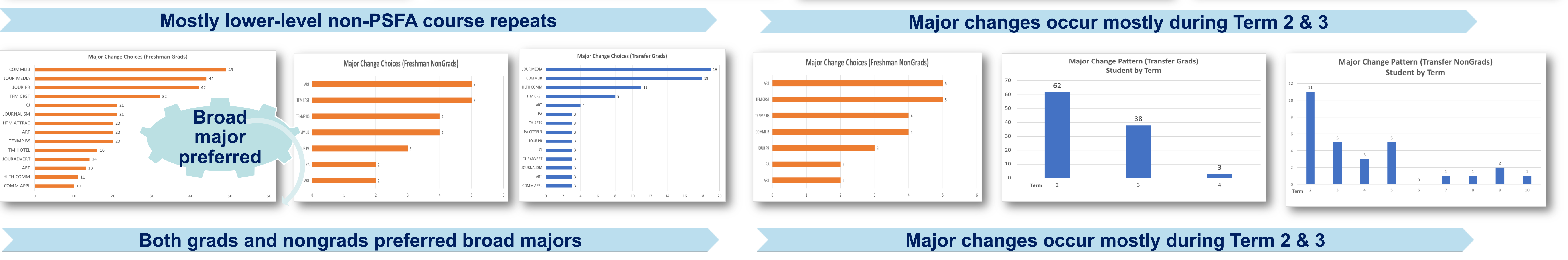
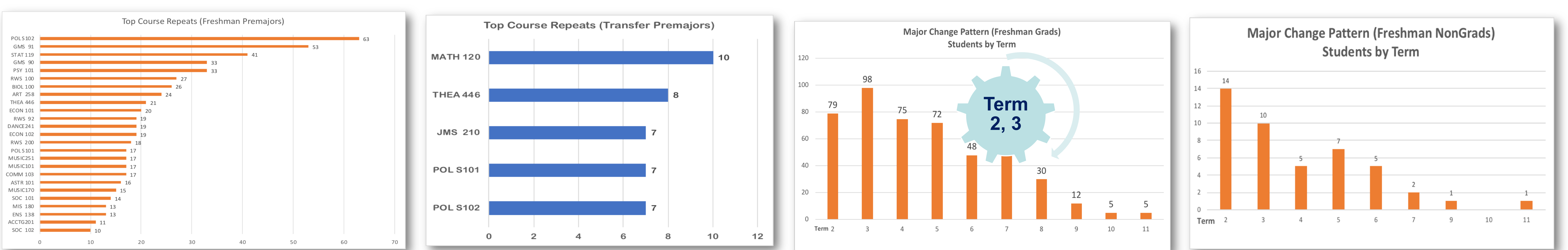


FINDINGS

Premajor/Graduate Trends: Primarily within-PSFA Migration; Long Time in Premajor Status



Potential Culprits: Course Repeats, Major Changes, Units, Demographics



Demographics: Sig. Predictors of Terms to Degree (ANOVAs)

- Hispanic, Male, First_Gen, Pell, URM
 - Service_Area, Summer enrollment, Probation, Housing, Part-time
 - Grad time: 3 majors longer than 1 major
- FTF Grads longer time to graduate
- In-service-area full-time transfer grads who enrolled in summer classes graduated significantly faster.

IMPLICATIONS & FUTURE DIRECTIONS

- Curriculum: Review and streamline premajor requirements; Examine course repeats.
- Advising: Focus on premajors (early advising on major change, earlier completion of preparation for major, unit load increase to 15 units/semester; focus on FTFs who are Hispanic, male, Pell, URM, first_gen, in-service-area, part-time, probation, off-campus); reach out to targeted community colleges.
- Resources needed: Faculty assigned time; Funding full-time advising services particularly for premajors; Transition advising for incoming transfer students.